

NEWSLETTER

ISSUE - 12

Page -1

KALAW ENDURES WORST FLOOD IN DECADE

On September 10th 2024, Kalaw faced its most devastating environmental disaster when Typhoon Yagi unleashed three consecutive days of heavy rain, triggering catastrophic floods and landslides. Mountain runoff combined with torrential downpours caused the Kalaw Creek to rise to over 18 feet in low-lying downtown areas. The floodwaters submerged homes, destroyed transportation infrastructure, and ravaged farmlands. This was the worst flood in over 40 years, impacting not only Kalaw but also surrounding areas like Heho, Inle, and villages across Southern Shan State.

Wards 2, 3, and 4, the lowest-lying parts of Kalaw's downtown, suffered the most damage. In these areas, residents sought refuge on rooftops and higher ground, awaiting rescue. According to the data we've gathered from local people so far, over 150



houses were severely damaged, and more than 2,000 residents across Kalaw and nearby villages were affected. Tragically, over 30 lives were lost.

The destruction of agriculture and local economies has created an urgent need for recovery efforts. In response, many organizations, individual donors and collective donors have stepped forward to provide emergency relief and rehabilitation support. Our Coming From Kalaw team has been

actively involved, volunteering for damage assessments, fundraising, and providing essential aid for ongoing recovery efforts.

“LAW KA NAT” GALLERY IN KALAW

For over two decades, the "Law Ka Nat" gallery, founded by full-time artist Than Maung, has been a cherished gem in Kalaw, located near the center of the town. This small gallery and studio was once a vibrant hub where visitors were warmly greeted by his smile. His artistic journey began at the National University of Arts and



Culture in Mandalay. After spending over a decade creating film posters, portraits, and magazine covers in Yangon, he returned to his homeland to establish the “Law Ka Nat” gallery.



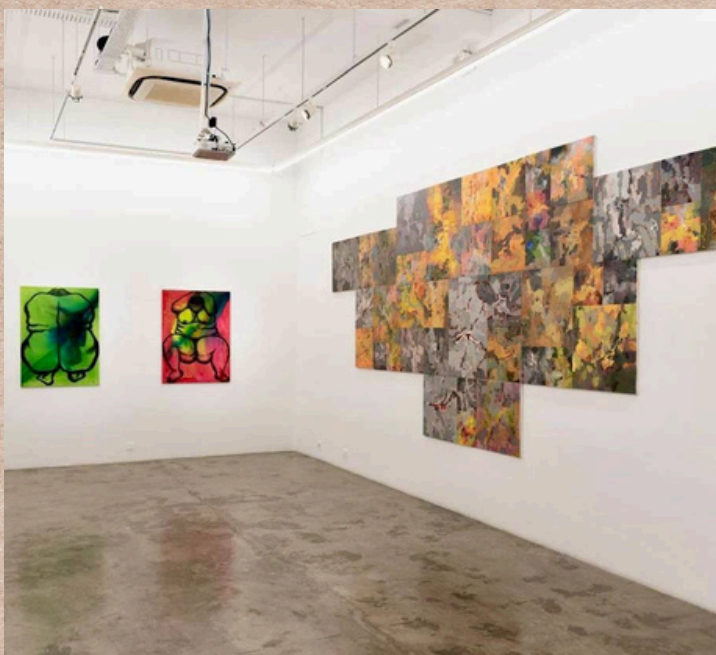
Inside the gallery, you'll find a range of artworks, including his expert portraits in pencil and charcoal, modern pieces created using knife painting techniques, and depictions of Southern Shan State's landscapes, ethnic groups and their daily lives. Now, Artist Than Maung is over 70s old, dedicating his life to art despite the challenges. Each morning, he opens the gallery, committed to his passion.

RESILIENCE IN SHADOWS: ART AMIDST ADVERSITY EXHIBITION

Coming from Kalaw (CfK) is excited to announce our first international art exhibition collaboration, curated by our CEO, Kyel Sin Lin. The exhibition, titled "Resilience in Shadows: Art Amidst Adversity," was hosted by A+ WORKS OF ART Gallery in Kuala Lumpur, Malaysia, a contemporary art space renowned for its focus on Malaysia and Southeast Asia. This exhibition was showcased from August 3rd to September 7th and exclusively featured works by four prominent Myanmar artists: Than Kyaw Htay, Kyu Kyu, Sandar Khaing, and Thyitar.



Through their conceptual artworks, these artists conveyed narratives rooted in personal life experiences, portraying the resilience, strength, and endurance of the people living in the country. Their art transcended borders, inviting audiences to reflect on shared adversities. While highlighting uncertainty and struggles, their creations also uncovered the empathy, solidarity, and hope necessary for survival.

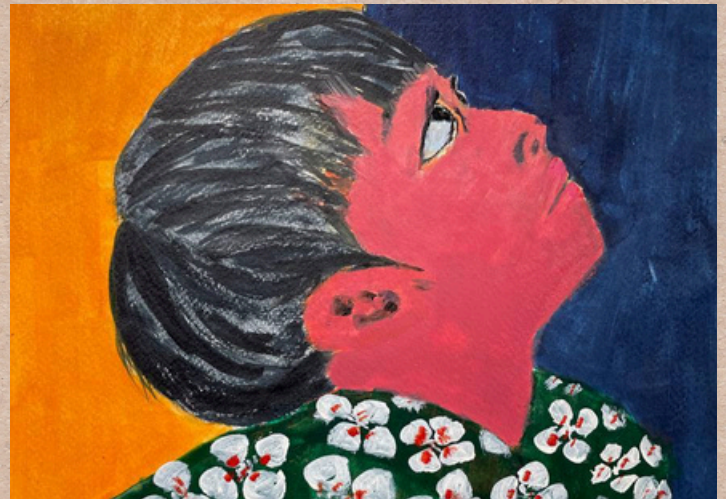


CfK extends its heartfelt thanks to these artists for entrusting our team with their works, and we are deeply grateful to A+ WORKS OF ART Gallery for this welcoming collaboration.

ARTIST D KYAW'S CAPTURING THE PRESSURES OF CHILDHOOD

Kyaw Naing Soe, known as Artist D Kyaw, based in Aung Ban, was born in 1987. His artistic journey began in 2011 under the mentorship of Artist Ko Latt (Khemarat). Inspired by the rich cultural landscapes of the Southern Shan region, he transforms his thoughts and ideas into unique creations. His knowledge and skills expanded through seasonal outdoor painting meetups with local artists.

In one of his notable series, he captures the pressures and moments of uninhibited gaze experienced by



children, inspired by his volunteer work at a summer art class for children in Aung Ban. Through sketches of their facial features and the use of a monochromatic palette, he reveals the untold struggles and pressures that children face.

Like adults, children experience their own worlds of stress and emotion. The mental support they receive and the pressures they encounter during childhood can leave a lasting impact into adulthood. Drawing on insights from Artist D Kyaw's personal experience, as well as from his friends and others around him, these creations depict the feelings of children that are often suppressed due to societal standards and external pressures. These influences highlight the pressure that shapes their childhood experiences.

A VISION FOR KALAW IN 30 YEARS

We're excited to share a painting by 11-year-old local artist Than Thar Htet, winner of our "A Vision for Kalaw in 30 Years" competition. The artwork portrays the Colonnade against a barren landscape, delivering a powerful message: In 30 years, there may be no trees left in the Kalaw mountains.

Unfortunately, despite replanting efforts, trees are still being cut down in our neighborhood. If this trend continues, Kalaw could face overcrowding, deforestation, and the loss of its natural beauty.



CARELESS MONKEY

CFK_Art Fund's four-day summer workshop featured five short courses from April 2nd to May 5th. A standout was Making an Animated Storyboard (April 23rd - 26th).

Led by filmmaker Ko Thaid Dhi and Ma Thu Thu Shein from Wathan Films with 17 students participating. The students' final project, "Careless



Monkey”, focused on themes of unity and environmental awareness. They developed the story, designed characters, took photos, and created an animated storyboard, with the audio edited by the teachers. The project was showcased to parents on graduation day.



SHIBORI DYE (OR) BASIC BATIK WORKSHOP

The Shibori Dye (or) Basic Batik Workshop was the fourth in our summer short course series, held from April 30th to May 3rd and taught by artist Thae Darli.

This workshop aimed to teach children about colors, designs, and patterns, using natural materials like leaves and flowers to create fabric decorations. It also provided them with valuable craft skills through hands-on learning.



SUPPORT FOR OUR LIBRARY

CFK_Art Fund has received a generous donation of books across various genres. However, we are currently facing challenges with storage and display shelving for a mini-library at the Htin Shuu Yeik gallery near Kalaw market, where we aim to encourage the local community to embrace reading. We welcome donors to support this initiative! To contribute, please contact us at comingfromkalaw@gmail.com or +959772775456. Any amount is appreciated.



**AVAILABLE ARTWORKS
FOR SALES**

Artist - Sai Moon

Title - Psyche

Size - 28" x 40"

Medium - Acrylic On Canvas

