

By focusing on promoting local artists, their lifestyles, and engaging with the art community through various activities, Coming From Kalaw(CFK) is contributing to the growth and development of the rich artistic culture of Southern Shan State. By curating exhibitions and engaging with the local art community, we provide a Htin Shuu Yeik (shadow of the Pine) gallery that serves as a hub for art lovers and creates free art classes for local kids.

Gmail - comingfromkalaw@gmail.com  
Phone - 09770174647



Issue- 3, June, 2023

# NEWSLETTER

## ☐ Kids' Art Classes

- Mothers' Day Workshop at Htin Shuu Yeik Gallery



## In this Issue

### ☐ About Us

### ☐ Kids' Art Classes

- Mothers' Day workshop at Htin Shuu Yeik Gallery
- Expressive Art Workshop
- Baw Hseng Class Expedition

### ☐ Artists Tour

### ☐ Mirror of Mind exhibition

### ☐ Top Tips

### ☐ Pindaya Small Businesses

- Handcraft from Pindaya
- Bamboo Hats Business

### ☐ Ads

### ☐ Artworks for SALE



“Happy Mothers' Day workshop” was dedicated for the parents to acquaint the intelligence of their children's creativity and to create opportunities for brain development, mastery, self-esteem through art. By engaging in open-ended play and creating artworks, children can enhance their senses, social-emotional skills, and multi-sensory abilities. The workshop emphasized that art could serve as a medium to strengthen the relationship between parents and children, fostering collaboration and communication. Overall, the workshop focuses on holistic child development and nurturing parent-child connections.



- CFK\_Coming From Kalaw



- CFK\_Art Fund



- Coming From Kalaw



## • Expressive Art workshop

Artist Zun Ei conducted an expressive art workshop focused on art therapy and she aimed to provide mental healing through art. The children participated in activities such as breathing exercises and body scanning to connect with their energy levels and emotions. They engaged in reflective drawing sessions, worked in pairs to trace and draw, and created ideal houses in groups. Each child presented their artwork, and the workshop was successful as the children enthusiastically participated and enjoyed the experience.

## • Baw Hseng Class Expedition

The kids recently had an exciting expedition to the Grace Estate Cottage House in Pindaya. The exhibition showcased artworks created by 4 residency artists and their local children, using flowers, leaves, and local shan paper. The kids observed and admired the artworks, while the artists explained the techniques and their experiences. By witnessing the diverse and inspiring artworks techniques on display, the kids were encouraged to explore new painting techniques (YoeYar Pachi). It was a motivating and enriching experience to unleash their creativity.



## □ Artists Tour

CFK team traveled around Heho, AyetharYar and Aungban with the residency artists from Pindaya to meet with the Southern Shan State based artists. Local artists involved with "Coming From Kalaw" were excited to share their knowledge and engage in meaningful conversations with emerging artists.

Inspired by this, CFK always aim to bring together artists from different generations to facilitate the exchange of unique perspectives and thoughts. Our ultimate vision is to create an art community where we are capable to support each other.





The "Mirror of Mind" exhibition was held on May 7th in collaboration with Shwe Sabwe Restaurant. The exhibition featured a collection of 20 paintings that combined abstract art with imaginative depictions of unknown faces. These paintings aimed to represent the reflection of emotions, feelings, and thoughts within the human mind, emphasizing that the face serves as a mirror of the mind.



## □ Mirror Of Mind



The exhibition showcased the unique collaborative creations of two artists, Win Phyo and Myo Thuzar from Aungban. CFK facilitated outdoor live painting and Q&A sessions to allow for a communication flow between the artists and the audience, and in turn, it created a chance for artists to speak up and be heard.

### Top Tip

Our CFK team went for a hike to Hmaing Lone Mountain. We enjoyed breathtaking views of the city from the mountain's peak as we are escaping the urban areas. Picking seasonal Malaphu and Mushrooms along the way back home must have added to the excitement of the hike.





# □ Pindaya Small Businesses

## • Handcraft from Pindaya



The Danu Traditional Weaving business is sustained by an over 80 years old grandmother in the village. Using a 200-year-old loom, she creates shawls with natural dyes and patterns. The materials are sourced from Taunggyi, and if unavailable, she makes her own dyes, revealing her resourcefulness and dedication to maintaining the craft's authenticity. The shawls are sold at 5000 MMK only, encouraging the support and development of local handicrafts to preserve tradition and promote the local business.

## • Bamboo Hats Business



CFK has observed the over 150 years old bamboo hat small family business in Pindaya. Growing their own bamboo on 1 acre land for production makes business sustainable for the long term. Once in every year they chopped down a certain number of bamboo and we were lucky enough to witness the process. After treatments and traditional making stages, the hats are widely delivered to different parts of the country. Because the bamboo hats business is no longer popular, the family has to rely on farming for their main income. However, they are still willing to maintain the traditional family business.

Please subscribe and follow our social media platforms to discover and engage with the local community, artists, their artworks, and handcraft businesses. We promise to showcase the best of the best in these areas, sharing and promoting the talents and livelihoods of the individuals in Kalaw.

**By the way, have you been to Kalaw?**

**If not, come and visit us!**

# Ads



- CFK\_Coming From Kalaw  
- CFK\_Art Fund



- Coming From Kalaw



# Artworks for SALE

Artist **Tin Myint Maung's** paintings always tell the cultural stories of Shan state. He founded the "**Htin Shuu Yeik Gallery**" in 1997, which was originally opened as a small bookshop near the Kalaw Market. His valuable contributions to Kalaw and the local art community are well-regarded. Now, we would like to share some of his artworks for your collection.



**TIN MYINT MAUNG**  
15" x 20"  
Acrylic on Canvas  
780,000 MMK



**TIN MYINT MAUNG**  
15" x 20"  
Watercolor on Canvas  
650,000 MMK



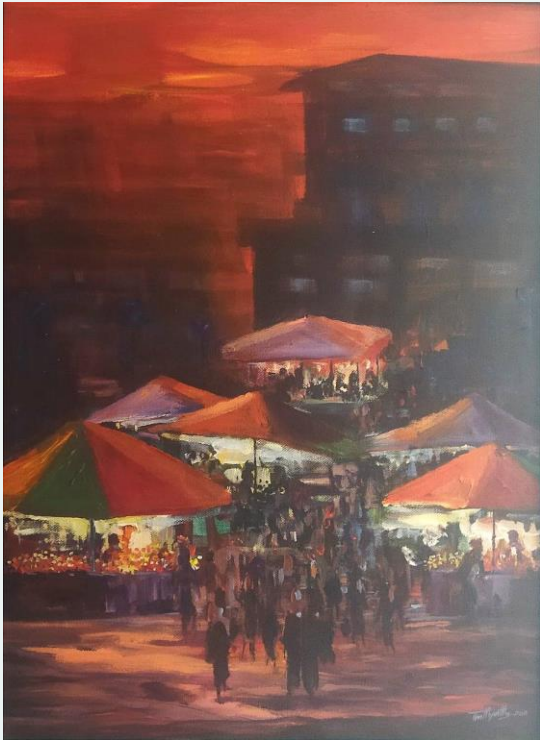
**TIN MYINT MAUNG**  
30" x 20"  
Acrylic on canvas  
1040,000 MMK

If any of these paintings speak to you... don't miss your chance!

Gmail - [comingfromkalaw@gmail.com](mailto:comingfromkalaw@gmail.com)  
Facebook - CFK\_Coming From Kalaw  
- CFK\_Art Fund  
Phone - 09770174647



# Artworks for SALE



**TIN MYINT MAUNG**  
15" x 20"  
Watercolor on Canvas  
780,000 MMK



**TIN MYINT MAUNG**  
16" x 19"  
Acrylic on canvas  
780,000 MMK



**TIN MYINT MAUNG**  
20" x 30"  
Acrylic on Canvas  
1,040,000MMK

If any of these paintings speak to you... don't miss your chance!

Gmail - [comingfromkalaw@gmail.com](mailto:comingfromkalaw@gmail.com)  
Facebook - CFK\_Coming From Kalaw  
- CFK\_Art Fund  
Phone - 09770174647